

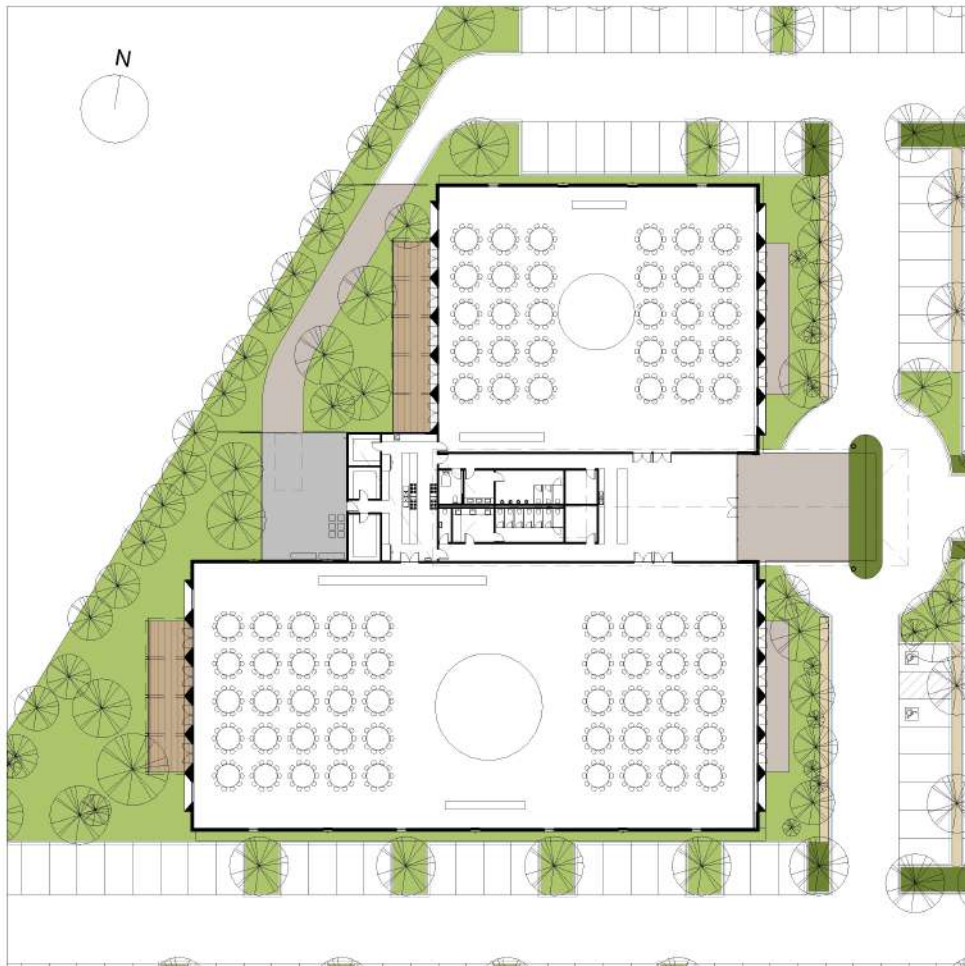


A commercial development located between Belgrave Hallam road and the Eummerring Creek wetlands, comprising Reception Centre for 550 patrons, Medical Centre and Child Care Centre.

Designed	2023
Completed	06 10 2023
Services Provided	SD TP
Builder	.
Construction Cost	.

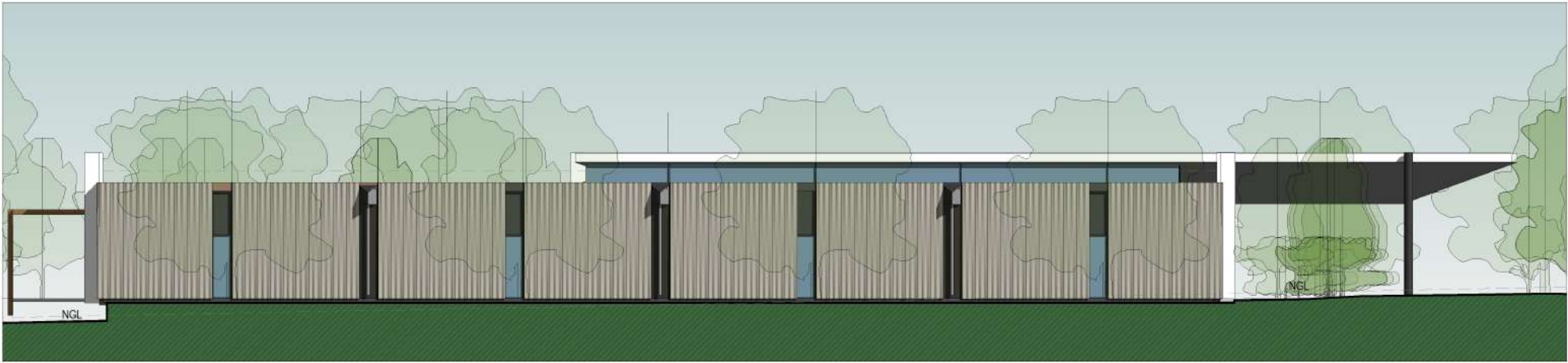
**COMMERCIAL DEVELOPMENT
HALLAM**





COMMERCIAL DEVELOPMENT
HALLAM





COMMERCIAL DEVELOPMENT
HALLAM

