

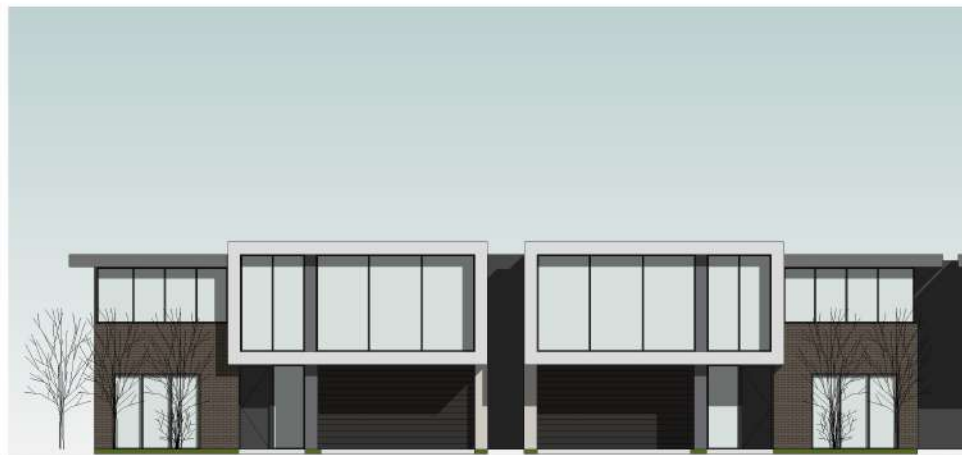
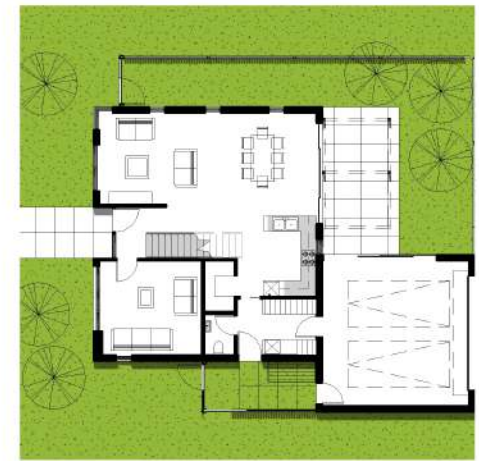


A large brownfield site is to be redeveloped into a mixture of low and medium density housing, together with the conversion of former industrial buildings into apartments, retail and community facilities. Seven basic house types were designed to be clustered in groups of varying densities.

Design	2011
Completed	.
Services	SM
Builder	.
Construction Cost	.

YARRAVILLE HOUSES





YARRAVILLE HOUSES

