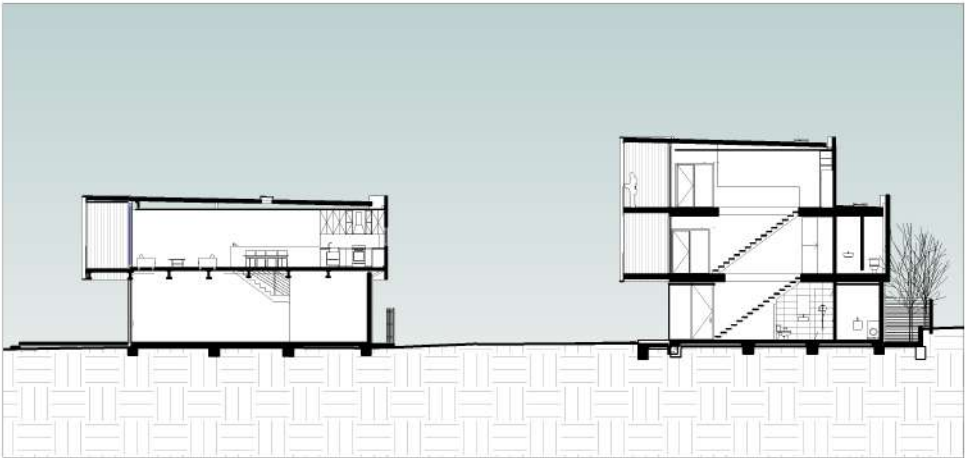


This site opposite Anglesea beach was developed into a mixture of retail, restaurant, apartments, townhouses and separate dwellings. The density of the development increased from the single housing allotments to the north, towards the higher density mixed use zones to the south. The project was constructed in two stages over a period of five years.

MAINBEACH ANGLESEA

Designed	2015
Completed	2020
Services Provided	SD TP WDC
Builder	ADMA GROUP
Construction Cost	.





MAINBEACH ANGLESEA





MAINBEACH ANGLESEA





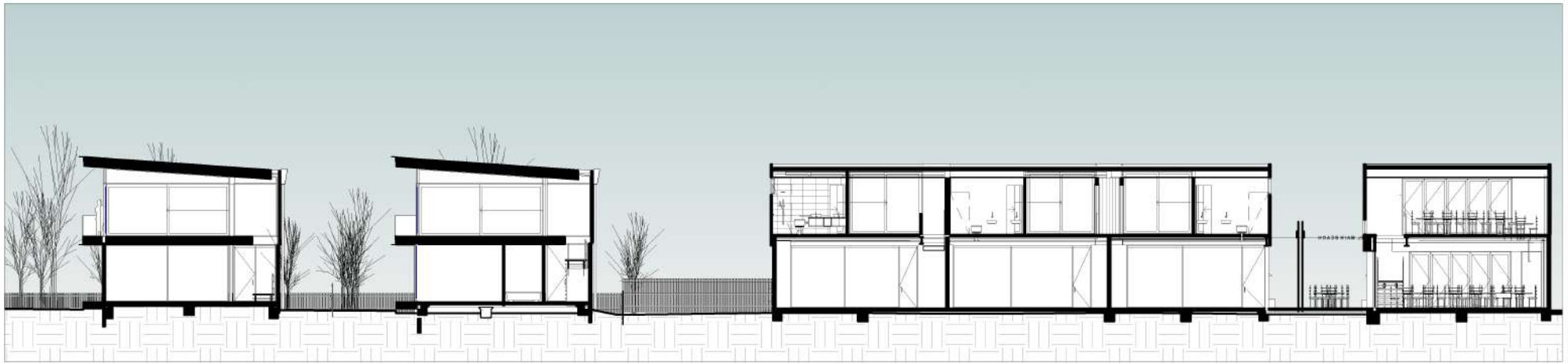
MAINBEACH ANGLESEA





MAINBEACH ANGLESEA





MAINBEACH ANGLESEA





MAINBEACH ANGLESEA

