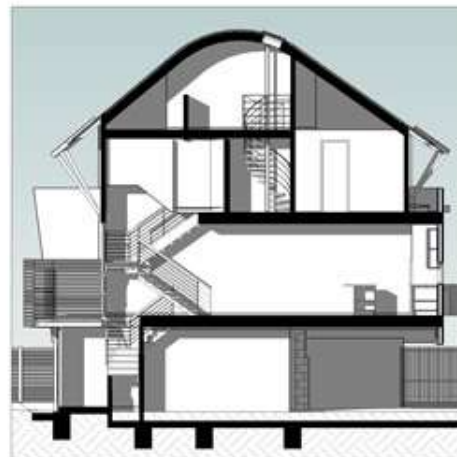


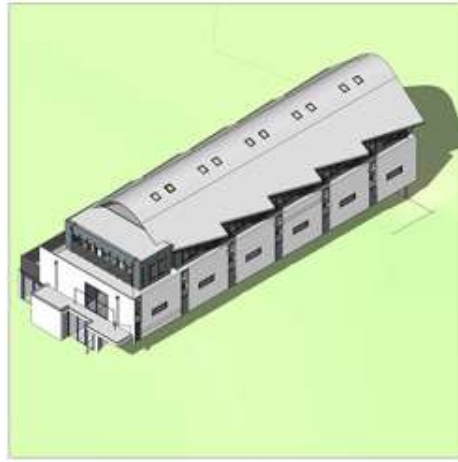
The site is located in a street dominated by flats and apartments, The building comprises six hybrid townhouse apartments over four levels. The principal living areas are at first floor level, utilising the north facing aspect along the long axis of the site. The bedrooms are generally on the second floor, plus an attic space within the curved roof form. although effectively a four level building, the facade reads as a tripartite composition of ground floor, cantilevered first floor, and roof form. Pedestrian and vehicular access is segregated along the north and south sides respectively, with car parking located directly below the apartments. The serrated edge of the roof form, together with the staggered screens to the terraces provides a sense of identity to each dwelling along the continuous built form.



Designed	2001
Completed	2006
Services Provided	SD TP WD
Builder	ADMA GROUP
Construction Cost	.

## EAST ST KILDA TOWNHOUSES





EAST ST KILDA TOWNHOUSES

