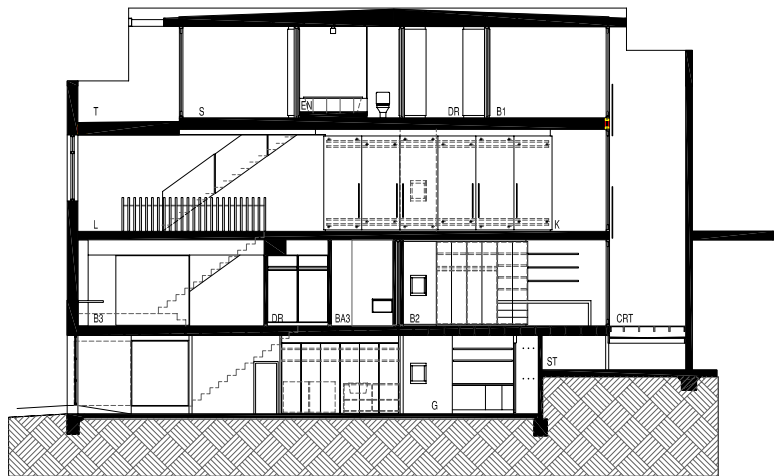
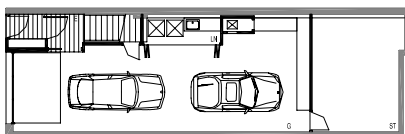
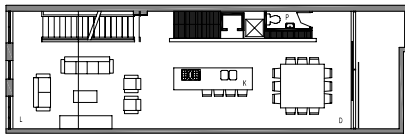


**WAREHOUSE CONVERSION**  
**SOUTH YARRA**  
Completed 2001

**VIC**

An existing factory was divided into several vacant 'shells'. Sufficient space existed within the volume of the building to provide four levels of accommodation, which required increasing the roof height, together with some excavation at ground level for car parking. The accommodation required four bedrooms, three bathrooms, and a large living area located at second floor level. As no open space exists for the building, all major rooms are oriented toward the rear courtyard which contains a three level water wall.



*Section*

*Floor Plans*