

**TOWNHOUSE DEVELOPMENT**  
**ST. KILDA**  
Completed 2006

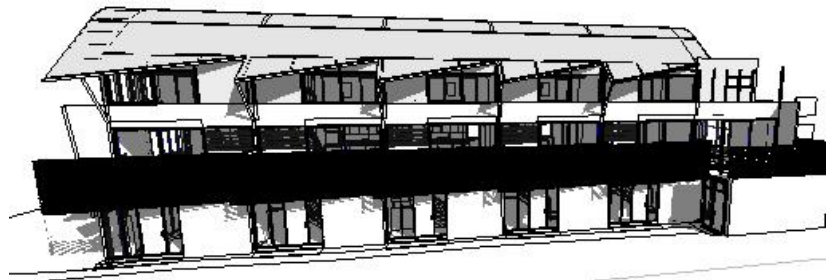
**VIC**

This site is located in a street currently dominated by flats and apartments, and thus it was considered an appropriate location for medium density housing.

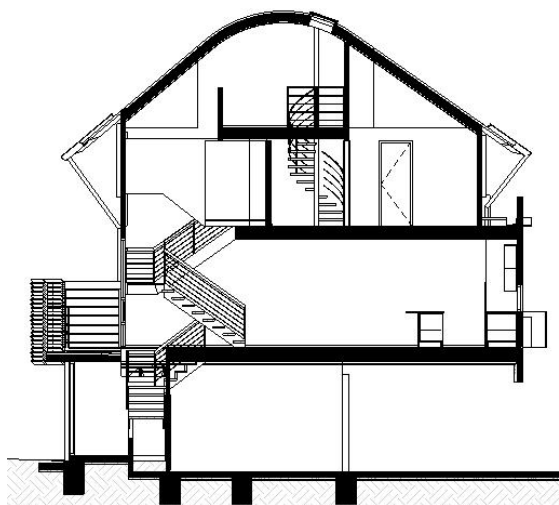
The building comprises six hybrid townhouse/apartments over four levels. The principal living spaces are at first floor level, utilising the north facing aspect along the long axis of the site. The bedrooms are generally on the second floor, plus an attic space within the curved roof form.

Although effectively a four level building, the façade reads as a tripartite composition – ground floor, cantilevered first floor, and roof form. Pedestrian and vehicular access is segregated along the north and south sides of the site respectively, with car parking located directly below the apartments above.

The 'serrated' edge of the roof form, together with the staggered screens to the terraces provides a sense of identity to each dwelling along the continuous built form.



*Perspective view from north*



*Section*



*Perspective view from east*