

**TOWNHOUSE DEVELOPMENT
NORTH FITZROY
Designed 2004**

VIC

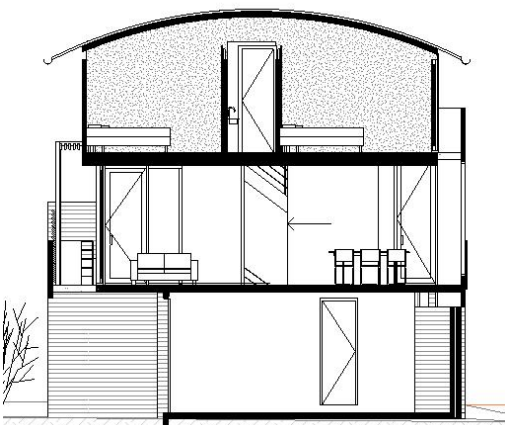
A corner site on an east-west axis, located opposite a park provided an opportunity for five large north facing dwellings. The separation of the dwellings is consistent with the subdivision patterns along the street and the residential allotments to the north. Each dwelling is accorded it's own identity with subtle differences in materials and elements, yet the overall building retains a sense of coherence, and a level of transparency through the fully glazed stairwells between each dwelling. The corner dwelling is given a heightened presence with the roof curving in two directions along the street frontages. The living areas are located on the first floor due to the lack of space at ground level primarily occupied by car parking, but also to make use of the opportunities for north facing living areas and terraces, and for views to the city from the south side of the living areas.



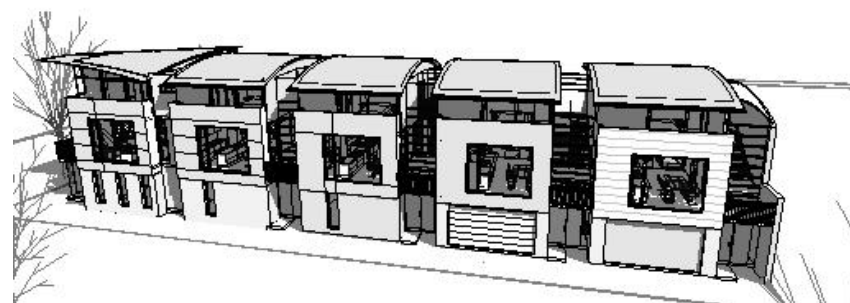
Southwest perspective



First Floor Plan



Section



Aerial Perspective